

Natural changes of population 1961 – 2022

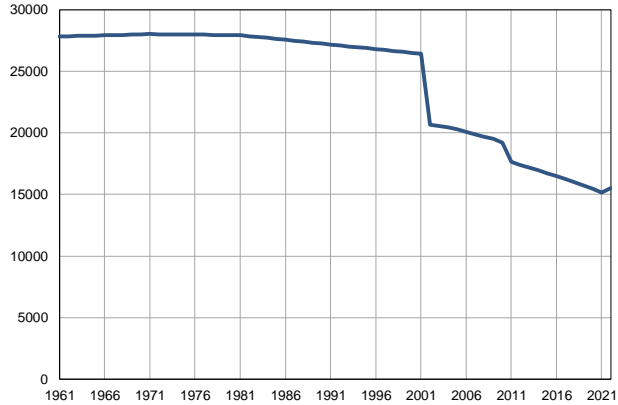
Profile
July 2023

Veliko Gradište

	1961	2022
Population size	27819	15521
Livebirths, Number	326	118
Deaths, Number	355	347
Natural increase, Number	-29	-229
Infants deaths, Number	19	1
Livebirths, per 1,000 population	12	8
Deaths, per 1,000 population	13	22
Natural increase, per 1,000 population	-1	-15
Infants deaths, per 1,000 livebirths	58	9

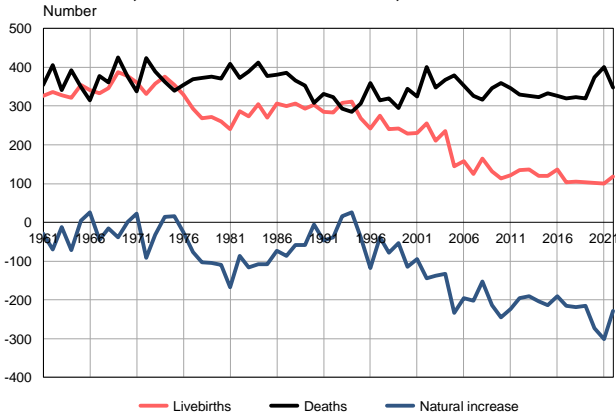
Source: Vital Statistics, SORS

Population size, 1961–2022



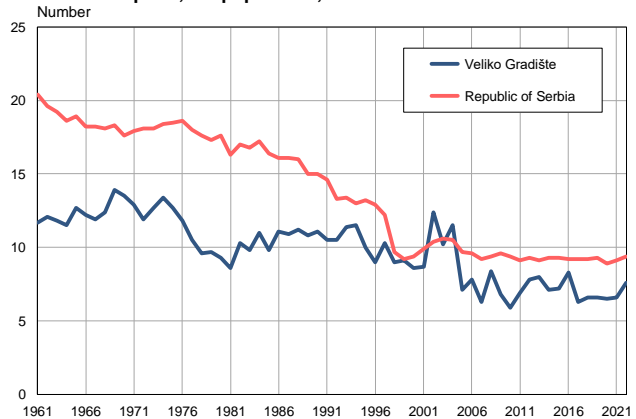
Source: Vital Statistics, SORS

Livebirths, deaths and natural increase, 1961–2022



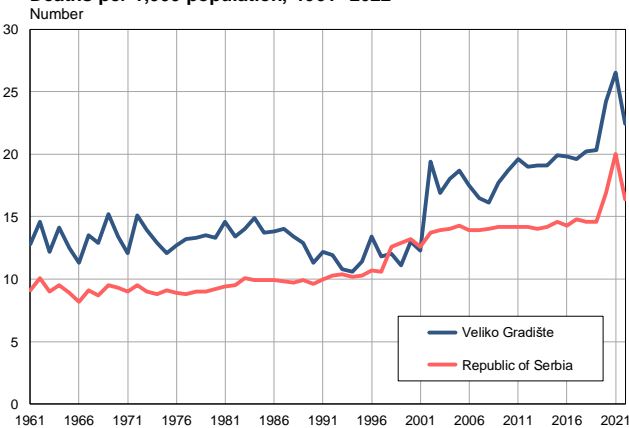
Source: Vital Statistics, SORS

Livebirths per 1,000 population, 1961–2022



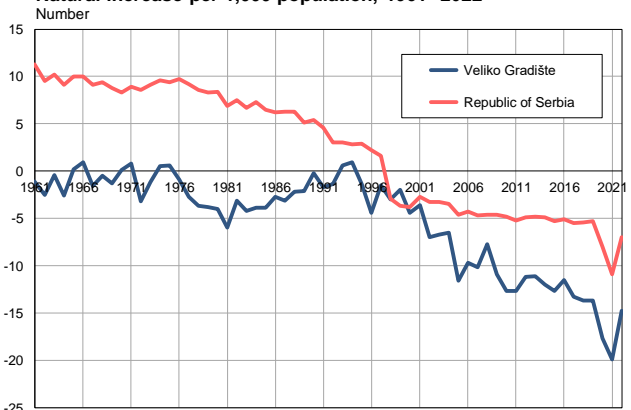
Source: Vital Statistics, SORS

Deaths per 1,000 population, 1961–2022



Source: Vital Statistics, SORS

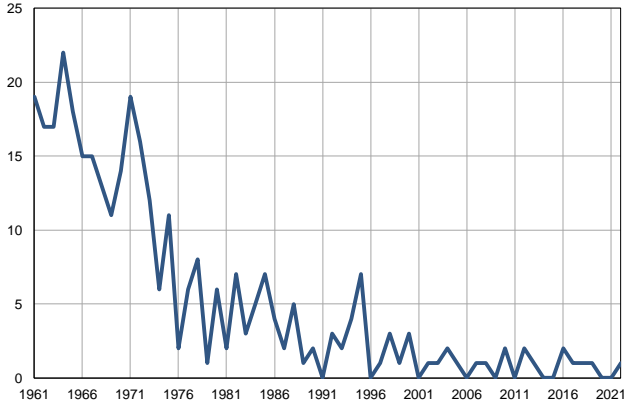
Natural increase per 1,000 population, 1961–2022



Source: Vital Statistics, SORS

Infants deaths, 1961–2022

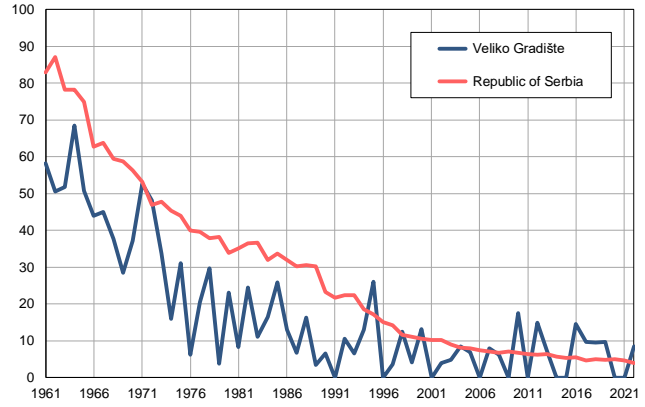
Number



Source: Vital Statistics, SORS

Infants deaths per 1,000 livebirths, 1961–2022

Number



Source: Vital Statistics, SORS

Table. Natural changes of population, Veliko Gradište

Year	Number of population	Livebirths	Deaths	Natural increase	Infants deaths	per 1000 population			Infant deaths per 1000 livebirths
						Livebirths	Deaths	Natural increase	
1961	27819	326	355	-29	19	11.7	12.8	-1.1	58.3
1962	27839	336	406	-70	17	12.1	14.6	-2.5	50.6
1963	27859	328	341	-13	17	11.8	12.2	-0.4	51.8
1964	27879	321	393	-72	22	11.5	14.1	-2.6	68.5
1965	27899	354	349	5	18	12.7	12.5	0.2	50.8
1966	27919	341	315	26	15	12.2	11.3	0.9	44.0
1967	27939	333	378	-45	15	11.9	13.5	-1.6	45.0
1968	27959	346	361	-15	13	12.4	12.9	-0.5	37.6
1969	27979	388	426	-38	11	13.9	15.2	-1.3	28.4
1970	27999	377	376	1	14	13.5	13.4	0.1	37.1
1971	28019	361	338	23	19	12.9	12.1	0.8	52.6
1972	28010	332	423	-91	16	11.9	15.1	-3.2	48.2
1973	28001	357	389	-32	12	12.7	13.9	-1.2	33.6
1974	27992	376	362	14	6	13.4	12.9	0.5	16.0
1975	27983	354	339	15	11	12.7	12.1	0.6	31.1
1976	27973	329	355	-26	2	11.8	12.7	-0.9	6.1
1977	27965	294	370	-76	6	10.5	13.2	-2.7	20.4
1978	27956	269	372	-103	8	9.6	13.3	-3.7	29.7
1979	27947	272	376	-104	1	9.7	13.5	-3.8	3.7
1980	27937	261	371	-110	6	9.3	13.3	-4.0	23.0
1981	27929	240	408	-168	2	8.6	14.6	-6.0	8.3
1982	27853	286	373	-87	7	10.3	13.4	-3.1	24.5
1983	27778	273	389	-116	3	9.8	14.0	-4.2	11.0
1984	27703	304	412	-108	5	11.0	14.9	-3.9	16.4
1985	27627	270	378	-108	7	9.8	13.7	-3.9	25.9
1986	27552	307	381	-74	4	11.1	13.8	-2.7	13.0
1987	27476	300	386	-86	2	10.9	14.0	-3.1	6.7
1988	27401	307	366	-59	5	11.2	13.4	-2.2	16.3
1989	27325	294	353	-59	1	10.8	12.9	-2.1	3.4
1990	27250	303	308	-5	2	11.1	11.3	-0.2	6.6
1991	27174	285	332	-47	0	10.5	12.2	-1.7	0.0
1992	27098	284	323	-39	3	10.5	11.9	-1.4	10.6
1993	27023	308	293	15	2	11.4	10.8	0.6	6.5
1994	26947	311	285	26	4	11.5	10.6	0.9	12.9
1995	26872	268	307	-39	7	10.0	11.4	-1.4	26.1
1996	26796	242	360	-118	0	9.0	13.4	-4.4	0.0
1997	26721	275	314	-39	1	10.3	11.8	-1.5	3.6
1998	26645	240	319	-79	3	9.0	12.0	-3.0	12.5
1999	26570	242	295	-53	1	9.1	11.1	-2.0	4.1
2000	26494	229	344	-115	3	8.6	13.0	-4.4	13.1
2001	26419	230	324	-94	0	8.7	12.3	-3.6	0.0
2002	20680	256	401	-145	1	12.4	19.4	-7.0	3.9
2003	20575	210	347	-137	1	10.2	16.9	-6.7	4.8
2004	20458	235	368	-133	2	11.5	18.0	-6.5	8.5
2005	20288	145	379	-234	1	7.1	18.7	-11.6	6.9

Table. Natural changes of population, Veliko Gradište

Year	Number of population	Livebirths	Deaths	Natural increase	Infants deaths	per 1000 population			Infant deaths per 1000 livebirths
						Livebirths	Deaths	Natural increase	
2006	20081	157	352	-195	0	7.8	17.5	-9.7	0.0
2007	19868	125	327	-202	1	6.3	16.5	-10.2	8.0
2008	19689	165	317	-152	1	8.4	16.1	-7.7	6.1
2009	19495	132	346	-214	0	6.8	17.7	-10.9	0.0
2010	19219	114	359	-245	2	5.9	18.7	-12.7	17.5
2011	17637	122	346	-224	0	6.9	19.6	-12.7	0.0
2012	17395	135	330	-195	2	7.8	19.0	-11.2	14.8
2013	17165	137	327	-190	1	8.0	19.1	-11.1	7.3
2014	16948	120	323	-203	0	7.1	19.1	-12.0	0.0
2015	16714	120	333	-213	0	7.2	19.9	-12.7	0.0
2016	16478	137	327	-190	2	8.3	19.8	-11.5	14.6
2017	16235	103	319	-216	1	6.3	19.6	-13.3	9.7
2018	15966	105	323	-218	1	6.6	20.2	-13.7	9.5
2019	15707	104	319	-215	1	6.6	20.3	-13.7	9.6
2020	15451	101	374	-273	0	6.5	24.2	-17.7	0.0
2021	15144	100	401	-301	0	6.6	26.5	-19.9	0.0
2022	15521	118	347	-229	1	7.6	22.4	-14.8	8.5

Source: Vital Statistics, SORS

Definitions

Population size

Number of population in the respective year. The data on the number of population in 1961, 1971, 1981 and 1991 are census data, while for the inter-census years the number of population was calculated as an average inter-census difference. From 2002 are given the population estimates that were calculated according to the census of population results and the annual statistics of natural mechanical population movements.

Livebirths

Absolute number of live births in the course of a year. Live born child means a child giving vital signs after birth (breathing, i.e. heartbeat), even for the shortest time, regardless the mother's pregnancy duration.

Deaths

Absolute number of deaths in the course of a year. Deceased is a person that whenever after having been born live, shows permanently stopped vital signs.

Natural increase

Natural population increase is the number of live births minus the number of deaths.

Infants deaths

Absolute number of infants deaths in the course of a year. Deceased infant is a child that after having been born live and before aged one year, shows permanently stopped vital signs.

Livebirths, per 1 000 population

Livebirths rate is the ratio of the number of live births and the population size in the respective year. The number of live births is divided by the population size and then multiplied by 1000.

Deaths, per 1 000 population

General mortality rate represents the ratio between the number of deaths and the population size in the respective year. The number of deaths is divided by population size and then multiplied by 1000.

Natural increase, per 1 000 population

Natural population increase rate is the difference between the number of live births and the number of deaths, in relation to the population size in the respective year.

Natural population increase rate = (number of live births - number of deaths) / population size * 1000

Infants deaths, per 1 000 livebirths

Infant mortality rate is the ratio of deceased children under 1 year of age and live births in the respective year. The mortality rate is expressed per 1000 live births.

Infant mortality rate = (number of deceased children under 1 year of age / number of live births) * 1000

Additional info:



Download all database data in Excel format:

[Data](#)



DevInfo profiles:

devinfo.stat.gov.rs/SerbiaProfileLauncher/?lang=en



DevInfo online database:

devinfo.stat.gov.rs/vitalna



For additional information or questions please contact:

devinfo@stat.gov.rs